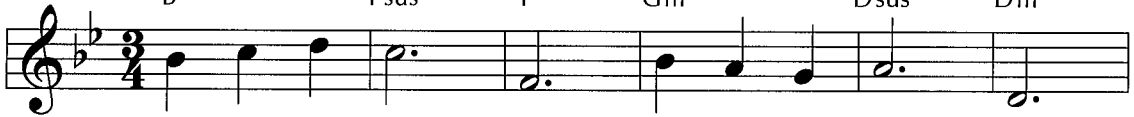


Sacred the Body

27

Capo 3: (G) (Dsus) (D) (Em) (Bsus) (Bm)
 B^b Fsus F Gm Dsus Dm



1 Sa - cred the bod - y God has cre - at - ed,
 2 Bod - ies are var - ied, made in all siz - es,
 3 Love re - spects per - sons, bod - ies and bound - aries.
 4 Ho - ly of ho - lies, God ev - er lov - ing,

(C) (D7) (G) (Am7) (Dsus) (D)
 E^b F7 B^b Cm7 Fsus F



tem - ple of Spir - it that dwells deep in - side.
 pale, full of col - or; both frag - ile and strong.
 Love does not bat - ter, ne - glect, or a - buse.
 make us your tem - ples; in - dwell all we do.

(G) (Dsus) (D) (Em) (Bsus) (Bm)
 B^b Fsus F Gm Dsus Dm



Cher - ish each per - son; nur - ture re - la - tion.
 Ho - ly the dif - ference, gift of the Mak - er,
 Love touch - es gent - ly, nev - er co -erc - ing.
 May we be care - ful, ten - der and car - ing,

(C) (G) (Em) (Am7) (D) (G) (G)
 E^b B^b Gm Cm7 F B^b B^b



Treat flesh as ho - ly, that love may a - bide.
 so let us hon - or each sto - ry and song.
 Love leaves the oth - er with pow - er to choose.
 so may our bod - ies give hon - or to you.