



1 Were you there when they cru - ci - fied my Lord? (Were you  
 2 Were you there when they nailed him to the tree? (Were you  
 3 Were you there when they pierced him in the side? (Were you  
 4 Were you there when the sun re - fused to shine? (Were you  
 5 Were you there when they laid him in the tomb? (Were you

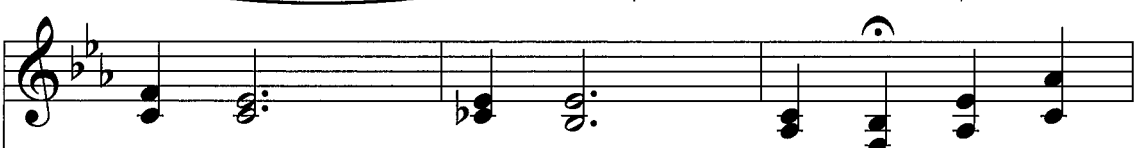


there?) Were you there when they cru - ci - fied my Lord?  
 there?) Were you there when they nailed him to the tree?  
 there?) Were you there when they pierced him in the side?  
 there?) Were you there when the sun re - fused to shine?  
 there?) Were you there when they laid him in the tomb?



O!

Some-times it caus - es me to



trem - ble,

trem - ble,

trem - ble. Were you



there when they cru - ci - fied my Lord? (Were you there?)  
there when they nailed him to the tree? (Were you there?)  
there when they pierced him in the side? (Were you there?)  
there when the sun re-fused to shine? (Were you there?)  
there when they laid him in the tomb? (Were you there?)

The image shows a musical score for a hymn. It consists of two staves: a treble clef staff at the top and a bass clef staff at the bottom. The key signature is one flat (B-flat). The melody is written in the treble clef, and the bass line is in the bass clef. The lyrics are centered between the two staves. The music features a series of chords and single notes, with a long, sustained note in the final measure of each line.

Opt. 6 Were you there when he rose up from the dead?