



THE MESSENGER

SEPTEMBER 2024

What's INSIDE

- 1 Craft Fair
- 2 Sips 'N Tidbits
- 3 Christian Education
- 4 Session highlights
- 5 Prayer requests, Volunteers needed
- 6 Fellowships, Birthdays

CRAFT FAIR

Come, discover and support unique handmade items from talented local vendors on **Saturday, November 9 at 9am-3pm!** This indoor event is open to all ages, making it the perfect family outing. Whether it's a special gift or Christmas shopping, it's a great shopping opportunity and you will find one-of-a-kind gifts for your loved ones!

Our event includes over 15 vendors, breakfast tacos in the morning and bake sale throughout the day and raffle draws. A food truck will be available on site in the parking lot.

To enter into the raffle draw, please bring any canned, non-perishable goods on the day of the Craft Fair. Amazing prizes/gift cards up for grabs!

Attention Vendors! We are seeking artisans to showcase their amazing creations. Don't miss this fantastic opportunity to share your craft with the community! \$50 per table; 30"x72" table space will be provided. Hope to see you there! Interested vendors can apply here:

<https://emmanuelpc.org/emmanuel-craft-fair/>

Vendor deadline registration: October 25, 2024

All applications will be pre-approved and a email confirmation will be sent out.

This event is hosted by Emmanuel Presbyterian Church, Bedford TX

No vendor communication or payments will be through our social media pages.

For any inquiries, feel free to email us : CraftFair@emmanuelpc.org



BIBLE STUDY (virtual):
TUESDAY AT 7:30 PM

MARK YOUR CALENDARS

(visit our website
www.emmanuelpc.org for
more calendar listing)



CONCERTS ON HARWOOD 2024

Flute Recital

by Mehrdad Gholami &
Tak Yan Yeung on the piano
Saturday, September 14
4 pm

BLESSING OF THE ANIMALS

Saturday, September 28
10am-11am

FALL SHRED DAY

Saturday, October 12
9am-11am

STEWARDSHIP LUNCHEON

Sunday, October 13
11am

SAVE THE DATE

EPC's first ever CRAFT FAIR

Saturday,
November 9
9am-3pm

See page 1

SIPS 'N TIDBITS

Emmanuel Presbyterian Church



young(ish) adult gathering Sunday September 15 2-3pm Chelsea Coffee House

Questions?

Contact Pastor Whitney whitney@emmanuelpc.org
or Molly Bolles miriambolles@gmail.com

(in the Sunrise Room)
3855 W Glade Rd, Unit 110
Colleyville, TX 76034



September 22 Worship & Music Program

This offering is used to purchase worship items and supplies and also helps EPC's music leadership offer special music programs not otherwise possible through the annual budget.

NEW CHURCH MEMBERS

New members joining in worship process shared their Faith Statements with Session on August 25th. They will be presented to the Congregation on Sunday September 22. September 22 during Worship.

NORTH TEXAS GIVING DAY SEPTEMBER 19, 2024

North Texas Giving Day is the largest community-wide giving event in the nation and mobilizes nonprofits and givers to create lasting impact in their communities.

If you choose, you may remember EPC's missions on this day. We greatly appreciate it.

EPC Mission Committee

CONCERTS ON HARWOOD 2024

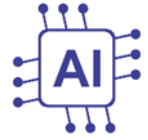
*A Classical Music Concert Series
Sharing the Joy of Classical Music with our Neighbors*

- ⇒ *Flute Recital* by Mehrdad Gholami: Saturday, September 14 at 4 pm
- ⇒ *Soprano Recital* by Jung-Ah Chou: Saturday, December 7 at 4 pm

These events will take place at 2701 Harwood Road, Bedford TX
inside the sanctuary.

Admission is free to the public. Donations are appreciated.

<https://emmanuelpc.org/concerts-on-harwood/>



Fall Current Issues Class: *Artificial Intelligence and Faith*
starting September 22

Many thanks to everyone who voted to help us choose current issues class topics! Based on your input, we will have a **four-session class on Artificial Intelligence and Faith on Sunday's after worship**, starting September 22. The class will be led by Ken Richardson and meets in-person in Room 5 (the Library) from 11:15 AM – Noon on Sunday's. They will take a break on Sunday's when congregation-wide events take place. **Class meeting dates: September 22, October 6, October 20, October 27.**

[Sign up here](#) to be included on Current Issues class emails.

Regular Group Gatherings Schedule for September

Emmanuel group gatherings take place both in-person and online. Online meeting links are included each week in the Emmanuel Weekly Email and are also available by contacting the church office (office@emmanuelpc.org). The current weekly schedule for gatherings is:

Sunday's

11:15 AM: Artificial Intelligence and Faith Class (in-person). Four-week discussion led by Ken Richardson in Room 5 (Library). **Class meeting dates: September 22, October 6, October 20, October 27.**

4:00 PM: Children and Youth Check-in and Devotional (virtual). Children and youth meet with two adult sponsors to share how they are doing, read and reflect on scripture, and pray together.

7:00 PM: Book Mavens Youth and Adult Book Club (virtual) meet online to discuss their September book *The Three Musketeers*, by Alexander Dumás, with Leah Wyckoff leading. For information on how to join, contact Leah Wyckoff (klh@sbcglobal.net).

Tuesday's

7:30-8:30 PM Bible Study (virtual). This study group discusses the biblical texts used in the next Sunday's worship service, with leadership rotating among the group. For information on how to join, contact Leah Wyckoff (klh@sbcglobal.net).

BOARD AND COMMITTEE HIGHLIGHTS- Session Committee Report

- Met with 3 representatives from Grace Presbytery's Committee on Preparation for Ministry to get an overview of the process for our church to sponsor an inquirer seeking to come under care of Grace Presbytery
- Heard from members of the recent Belonging class to hear their faith journeys and voted:
 - 1) to authorize the baptism on September 22nd of Caroline Loy and Jude Langsdorf
 - 2) to receive into membership during worship on September 22nd:
 - a) by affirmation of faith - Caroline Loy and Jude Langsdorf
 - b) by reaffirmation of faith - Elaine Hsieh, Leah Langsdorf, and Frank LeCocq
- Learned that Whitney will be attending the GA Committee for Ecumenical and Interreligious Relations Meeting September 9-12 in Louisville, KY
- Was informed of Whitney's October sermon series featuring lessons from the season of fall.
- Agreed to hold a Called Session Meeting on a date to be determined to meet with Molly Bolles regarding her sense of call and plans to pursue preparation for ministry as a Minister of Word and Sacrament
- Voted to pay the church's \$300 portion of the cost of a psychological assessment for potential Inquirer Molly Bolles and asked Finance Committee to create a line item in the 2025 budget to help assist her with expenses related to preparation for ministry
- Elected Linda Greenwell and Mary Ann Reed as commissioners to the Stated Meeting of Grace Presbytery at First Presbyterian Church, Waco, on Saturday, September 21st
- Voted to hold ALICE safety training (Alert, Lockdown, Inform, Counter, Evacuate) on Sunday, September 29th, following worship for 2.5-3 hours, with a light lunch to be provided by the Worship Committee. Audience would be elders, deacons, EPC staff, building tenants, and interested members of the congregation to be led by trained representatives of Grace Presbytery
- Voted to move the Asire family's recent \$10,000 donation from Unrestricted Memorials to Capital Goods Escrow to help to cover the cost of replacing the SoRelle A/C system.
- Was informed that the first gathering of Youngish Adults will be held with Whitney and Molly Bolles on Sunday, September 15th, from 2-3 p.m. at the Chelsea Coffee House in Colleyville
- Was reminded that lunch bags for Presbyterian Night Shelter will be prepared following worship on Sunday, September 1st
- Session was reminded that World Communion Day will be celebrated on October 6th and a separate All Saints Service will be held in afternoon of November 3rd.
- Upcoming special events include the following:

| | |
|-------------------------|--|
| Concerts on Harwood | Saturday, September 14th, 4 pm with Mehrdad Gholami, flute |
| Blessing of the Animals | Saturday, September 28th, 10-11 am |
| Shred Day | Saturday, October 12th, 9-11 am |
| Trunk or Treat | Saturday, October 26th, 5-7 pm |
| Craft Fair | Saturday, November 9th, 9 am - 3 pm |
- Learned that the Keys to the Bible class is looking for leadership and that a Sunday school interest survey is being circulated for 4-week short-term studies in the fall



We offer three ways to submit prayer requests at this time:

- ◆ You may scan the QR code right or on the church bulletin or
- ◆ Write your prayers on the slips of paper provided in church service, or
- ◆ Send via email to prayer@emmanuelpc.org.

Be sure to designate in the email/form if the request is for the pastors only or if it can also be shared with the congregation. All prayers received by Sunday evening will be included in the weekly prayer list. Prayers may be edited for clarity and brevity, but the essence will still be there.

****Prayer requests received through texts are not recommended. ****

Thank you for sharing prayer concerns and participating in the congregation's prayer life!

WANT TO HOST HOSPITALITY SUNDAYS?

Do you have gifts for hospitality and welcoming people? Emmanuel's Deacons are looking for volunteers to host refreshments after worship on a Summer Sunday. Host by yourself or partner with a friend or family member, whatever works for you. Sunday Hospitality hosting involves about 20 minutes of setup before worship, then serving food after worship and cleaning up. We have some treats on-hand in the fellowship hall freezer and funds are available to reimburse you for food purchased.

To sign up, contact Helen S. or write your name on the Sunday Hospitality schedule in the narthex. Thank you for considering it!

VOLUNTEERS NEEDED

NURSERY VOLUNTEERS REQUIRED

The Christian Education is asking for people to volunteer occasionally in the Nursery on Sundays. Kelly Balthrop is our nursery worker but our Child Protection Policy requires no less than 2 adults in the nursery with the children. This does not have to be on a regular basis but will give most of you a chance to enjoy being with the children.

There is a sign up sheet in the Narthex and the CE committee would appreciate the extra help. What a wonderful way to use your talents at Emmanuel!

AUDIO VISUAL VOLUNTEERS NEEDED

Would you like to help with the sound system and video streaming in worship? If so, please contact Ken R. to participate in a training session.

SUNDAY OFFERING COUNTERS NEEDED!

For Sunday Offering Counters, sign up at [Sign Up Genius](#). One of the counters should be an ELDER and the other person a Volunteer. Thank you for volunteering!!



Fellowship

Opportunities

Ruth Fellowship

(3rd Monday of each month, 6:30 pm)

Monday, September 16, 2024
6:30 pm

Cotton Patch Cafe
4020 William D. Tate Ave,
Grapevine 76051

For more information contact:
Linda G: xxx-xxx-7197



Lois Circle

(1st Thursday of each month, 1 pm)

Thursday, September 5, 2024
12:00 noon

First Watch
1230 Red River #100, Glade Parks
Euless TX 76039

For more information contact:
Donna R: xxx-xxx-5464 or
Denise K: xxx-xxx-8665

Like, Follow,
Subscribe to
stay-up-to date



BIRTHDAYS



| |
|----------------------|
| John Phillips 9/07 |
| David Turner 9/12 |
| Denise Karriker 9/25 |
| Linda Greenwell 9/25 |
| Cheryl Dale 9/28 |

Craft Fair Addition - Church Donation Table

The Craft Fair is on November 9, 9 AM to 3 PM. A church table of craft donations has been added. Do you have one homemade item or more up in your closet that you never gave to Aunt Matilda? We would be happy to accept your donation of Aunt Matilda's gift to sell at the craft fair. All proceeds go to the church.

There will be a box in the narthex beginning October 27. Please label your items with you name and the price the item should sell for. Unsold items will be donated to NEED. Thank you in advance for your donations.

If you have questions, please text Lisa Keyes at 817 366 1628.

To submit newsletter articles, events or any other information, please email office@emmanuelpc.org by the fourth Sunday of each month.

EMMANUEL PRESBYTERIAN CHURCH

2701 Harwood Rd
Bedford TX 76021

**2701 HARWOOD RD, BEDFORD TX 76021 | 817-545-0251 | WWW.EMMANUELPC.ORG
MAILING ADDRESS: PO BOX 663, BEDFORD TX 76095-0663**