



# THE MESSENGER

OCTOBER 2024

## What's INSIDE

- 1 Fall Sermon Series
- 2 Sips 'N Tidbits
- 3 Christian Education
- 4 Session highlights
- 5 Prayer requests, Volunteers needed
- 6 Fellowships, Birthdays

## Pastor's Post

For all that we hold on to, for all that we cling to, our stories, our prayers, our convictions, give us the courage to let go. Give us the courage to open ourselves in this season of falling leaves.

Help us to open our hands, our minds and our hearts, trusting that in letting go new beginnings are nurtured and the ground beneath us whispers 'Thank you'.

*Letting go* by Fiona van Wissen

*Happy Fall, y'all!* I have long been a lover of this season, and this year, I decided to help us enter into the lessons Fall has to teach us

through a sermon series for the month of October. Of course, we are all familiar with that beloved Ecclesiastes text – *for everything there is a season*. But Fall has some other lessons to teach us from scripture as well. We will read about the movement of people from the Tower of Babel in Genesis and the seasonal movement of birds in Jeremiah to learn of the gift of **migration** on World Communion Sunday. We will engage with Isaiah proclaiming release to the captives and Ephesians calling for letting go of bitterness to embrace the gift of **release** this season. We will visit with Daniel who describes God's knowledge of dark and hidden things and Job's description of God's creation as a womb to welcome the gift of **darkness** this season, not as something to be feared but a place for rest, slow growth, and trust. Finally, we will return to that beloved Ecclesiastes text about seasons, and pair it with Psalm 65 to hear of God crowning the year with bounty and all creation joins in that happy song as we sing of the gift of **color**.

My prayer is that this sermon series will be a companion for each of us in this season to burrow deeply into the God-given wisdom of our created world, its creatures and seasons, and our own lives. Welcome these coming days. Embrace the gifts of migration, release, darkness, and color, as we walk with God this season, and all seasons of life.

Peace,  
Pastor Whitney

**EMMANUEL PRESBYTERIAN CHURCH**  
10 AM SUNDAYS

**OCTOBER 6** WORLD COMMUNION SUNDAY *MIGRATING*  
GENESIS 11:1-9, JOB 12:7-10, JEREMIAH 8:4-7

**OCTOBER 13** *RELEASING*  
ISAIAH 61:1-4, EPHESIANS 4:25-32

**OCTOBER 20** *WELCOMING THE DARK*  
DANIEL 2:17-23, JOB 38:4-11

**OCTOBER 27** *SEEKING COLOR*  
PSALM 65, ECCLESIASTES 3:1-8

2701 HARWOOD RD. BEDFORD, TX 76021  
WWW.EMMANUELPC.ORG



**BIBLE STUDY (virtual):**  
TUESDAY AT 7:30 PM

# MARK YOUR CALENDARS

(visit our website  
[www.emmanuelpc.org](http://www.emmanuelpc.org) for  
more calendar listing)

## NATIONAL NIGHT OUT

Tuesday, October 1  
5:30-7:30pm

## LITTER STOMP

Saturday, October 5  
8am-10:30am

## WORLD COMMUNION

### DAY

Sunday, October 6  
10am

## FALL SHRED DAY

Saturday, October 12  
9am-11am

## STEWARDSHIP LUNCHEON

Sunday, October 13  
11am

## TRUCK OR TREAT

Saturday, October 26  
5-7pm

### SAVE THE DATE

#### *EPC's first ever* CRAFT FAIR

Saturday,  
November 9  
9am-3pm

*See page 1*

## SIPS 'N TIDBITS

### Craft Fair Addition - Church Donation Table

The Craft Fair is on November 9, 9 am to 3 pm. A church table of craft donations has been added. Do you have one homemade item or more up in your closet that you never gave to Aunt Matilda? We would be happy to accept your donation of Aunt Matilda's gift to sell at the craft fair. All proceeds go to the church.

There will be a box in the narthex beginning October 27. Please label your items with you name and the price the item should sell for. Unsold items will be donated to NEED. Thank you in advance for your donations.

If you have questions, please text Lisa K. at 817 366 1628.



**Artificial Intelligence and Faith**  
October 6, October 20,  
October 27, November 3

**Phone Clinic– How to seminar**  
October 20

*More details, read page 3*

### BLESSINGS OF THE ANIMALS

Thanks you for all those who showed up with their adorable pets on Saturday, September 28 for the Blessings of the Animals. It was an amazing day. We will definitely have it next year.

## CONCERTS ON HARWOOD 2024

*A Classical Music Concert Series*  
*Sharing the Joy of Classical Music with our Neighbors*

⇒ *Soprano Recital by Jung-Ah Chou: Saturday, December 7 at 4 pm*

This event will take place at 2701 Harwood Road, Bedford TX  
inside the sanctuary.

Admission is free to the public. Donations are appreciated.

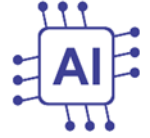
<https://emmanuelpc.org/concerts-on-harwood/>

# CHRISTIAN EDUCATION NEWS

## Keys to the Bible Class

Keys to the Bible Class begins meeting weekly on Sunday, October 6<sup>th</sup> to study the Book of Acts. They meet in-person after worship in Room 5 (the Library) and invite anyone interested in exploring Acts to join them. Class contacts are John Stocking and Ray Karriker.

## Fall Current Issues Class: *Artificial Intelligence and Faith* through November 3rd



A four-session class on **Artificial Intelligence and Faith** is underway through November 3<sup>rd</sup>. They meet right after the worship + fellowship time in SoRelle Hall, starting around 11:15-ish. In addition to four class discussions, the class members will help with a Phone Clinic after worship on Sunday, October 20<sup>th</sup>. See the class schedule below:

- Sep 22 - First class
- Sep 29 - no class because of Safety training event
- Oct 6 - Class #2
- Oct 13 - no class due to Stewardship lunch
- Oct 20 - Class project: Phone Clinic – Assist people with doing things with their phones
- Oct 27 - Class #3
- Nov 3 - Class #4

[Sign up here](#) to be included on Current Issues class emails.

## Regular Group Gatherings Schedule for October

Emmanuel group gatherings take place both in-person and online. Online meeting links are included each week in the Emmanuel Weekly Email and are also available by contacting the church office ([office@emmanuelpc.org](mailto:office@emmanuelpc.org)). The current weekly schedule for gatherings is:

### Sunday's

#### 11:15 AM:

- **Artificial Intelligence and Faith Class** (in-person). Four-week discussion led by Ken Richardson in SoRelle Hall. **Class meeting dates: October 6, October 20, October 27, and November 3**
- **Keys to the Bible Class** (in-person). They meet weekly in Room 5 (the Library) and are studying the Book of Acts.

**4:00 PM: Children and Youth Check-in and Devotional** (virtual). Children and youth meet with two adult sponsors to share how they are doing, read and reflect on scripture, and pray together.

**7:00 PM: Book Mavens Youth and Adult Book Club** (virtual) are taking a break in October and will resume in November.

### Tuesday's

**7:30-8:30 PM Bible Study** (virtual). This study group discusses the biblical texts used in the next Sunday's worship service, with leadership rotating among the group. For information on how to join, contact Leah Wyckoff ([klh@sbcglobal.net](mailto:klh@sbcglobal.net)).

## BOARD AND COMMITTEE HIGHLIGHTS- Session Committee Report

- Learned that Pastor Whitney has become a Community Mentor for Trinity High School's Trojan Talks Program once a month
- Was reminded of the Blessing of the Animals on Saturday, September 28th and the All Saints Service November 3rd at 4:00 p.m.
- Was informed that Whitney will attend the National Council of Churches Faith and Order Meeting October 14th-16th via Zoom
- Was reminded of the Safety Training scheduled for Sunday, September 29th, following worship and light lunch
- Voted to officially approve the formation of the Youngish Adult Group
- Received a report from Elder Commissioners Linda Greenwell and Mary Ann Reed on the Stated Meeting of Grace Presbytery September 21st at First Presbyterian Church, Waco
- Was reminded that a fall sermon series begins October 6th
- Voted to schedule a Called Session Meeting October 20th at noon to enroll Molly Bolles as an Inquirer for the Ministry
- Received updates on repair plans for SoRelle Hall A/C and the flooring project in the CE building
- Voted to add the tax overpayment from the IRS totaling \$2,642 to date to the capital goods escrow account
- Learned that the fall work day is scheduled for Saturday, November 16th
- Learned that the Stewardship luncheon is scheduled for October 13th, with a 2025 goal of \$25,000 in new and increased total pledges. Time and Talent surveys will be distributed October 6th and collected at the luncheon.
- Was made aware that 134 lunch bags were assembled September 1st for the Presbyterian Night Shelter.
- Learned that Voter Registration and General Election information will be posted in the narthex
- Heard about how per capita is calculated and that the amount Emmanuel contributes to the greater church may change in 2025
- Outreach and Connection upcoming events include:

Blessing of the Animals	Sept. 28th	10 am
Shred Day	Oct. 12th	9-11 am
Trunk or Treat	Oct. 26th	5-7 pm
Craft Fair	Nov. 9th	9 am-3 pm



We offer three ways to submit prayer requests at this time:

- ◆ You may scan the QR code right or on the church bulletin or
- ◆ Write your prayers on the slips of paper provided in church service, or
- ◆ Send via email to [prayer@emmanuelpc.org](mailto:prayer@emmanuelpc.org).

Be sure to designate in the email/form if the request is for the pastors only or if it can also be shared with the congregation. All prayers received by Sunday evening will be included in the weekly prayer list. Prayers may be edited for clarity and brevity, but the essence will still be there.

**\*\*Prayer requests received through texts are not recommended. \*\***

Thank you for sharing prayer concerns and participating in the congregation's prayer life!

### **WANT TO HOST HOSPITALITY SUNDAYS?**

Do you have gifts for hospitality and welcoming people? Emmanuel's Deacons are looking for volunteers to host refreshments after worship on a Summer Sunday. Host by yourself or partner with a friend or family member, whatever works for you. Sunday Hospitality hosting involves about 20 minutes of setup before worship, then serving food after worship and cleaning up. We have some treats on-hand in the fellowship hall freezer and funds are available to reimburse you for food purchased.

To sign up, contact Helen S. or write your name on the Sunday Hospitality schedule in the narthex. Thank you for considering it!

## **VOLUNTEERS NEEDED**

### **NURSERY VOLUNTEERS REQUIRED**

The Christian Education is asking for people to volunteer occasionally in the Nursery on Sundays. Kelly Balthrop is our nursery worker but our Child Protection Policy requires no less than 2 adults in the nursery with the children. This does not have to be on a regular basis but will give most of you a chance to enjoy being with the children.

There is a sign up sheet in the Narthex and the CE committee would appreciate the extra help. What a wonderful way to use your talents at Emmanuel!

### **AUDIO VISUAL VOLUNTEERS NEEDED**

Would you like to help with the sound system and video streaming in worship? If so, please contact Ken R. to participate in a training session.

### **SUNDAY OFFERING COUNTERS NEEDED!**

For Sunday Offering Counters, sign up at [Sign Up Genius](#). One of the counters should be an ELDER and the other person a Volunteer. Thank you for volunteering!!





## Fellowship Opportunities

### Ruth Fellowship

*(3rd Monday of each month, 6:30 pm)*

**Monday, October 21, 2024  
6:30 pm**

**Bohemian Bull Restaurant**  
1112 W. Northwest Highway  
Grapevine 76051

**For more information contact:**  
**Nancy C:** xxx-xxx-0632



### Lois Circle

*(1st Thursday of each month, 1 pm)*

**Thursday, October 3, 2024  
12:00 noon**

**Lazy Dog Restaurant**  
2521 State Highway 121  
Euless TX 76039

**For more information contact:**  
**Donna R:** xxx-xxx-5464 or  
**Denise K:** xxx-xxx-8665

Like, Follow,  
Subscribe to  
stay-up-to date



## BIRTHDAYS

# OCTOBER Birthdays

Mark P	10/01	Susan G	10/12
Lisa K	10/03	Rick T	10/16
Barbara T	10/09	Anni W	10/17
Nancy C	10/09	Leah W	10/17
Randal W	10/09	Renee W	10/18
Susan La P	10/10	Shirley M	10/28

Emmanuel Presbyterian Church, Bedford TX

Sunday October 13  
after Worship

# STEWARDSHIP

# Luncheon

To submit newsletter articles, events or any other information,  
please email [office@emmanuelpc.org](mailto:office@emmanuelpc.org)  
by the fourth Sunday of each month.

**EMMANUEL PRESBYTERIAN CHURCH**

2701 Harwood Road  
Bedford TX 76021

**2701 HARWOOD RD, BEDFORD TX 76021 | 817-545-0251 | [WWW.EMMANUELPC.ORG](http://WWW.EMMANUELPC.ORG)  
MAILING ADDRESS: PO BOX 663, BEDFORD TX 76095-0663**